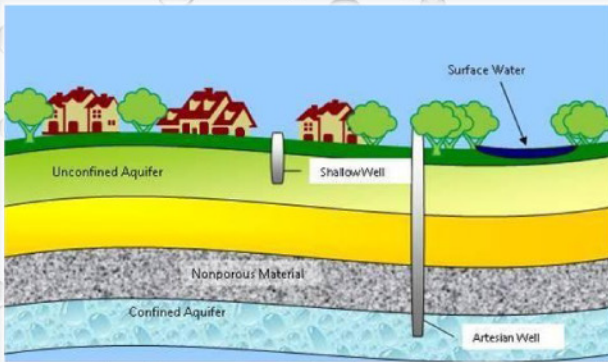


## Main Benefits

- Dissolves and removes existing limescale
- Prevents new limescale accumulation
- Kills bacteria and algae
- Inhibits corrosion
- Reduces valve clogs
- Maximizes water pressure
- Increases water flow
- Boosts filtration efficiency

## Environmental & Financial Benefits

- Reduces the usage of electricity
- Increases the efficiency of water heating, appliances and machinery
- Eliminates or decreases chemical usage
- Increases life span of water heater, solar panels
- Eliminates clogging
- No impact on the water table

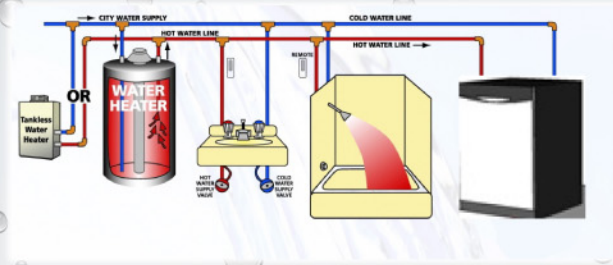


## Additional Benefits

- Non-intrusive and easy to install - no plumbing required
- Reduce water spotting
- Does not depend on water flow; treats slow moving and standing water.
- Propagates the *HydroFLOW* signal along the entire water system
- Provides twenty-four hour protection
- Does not interfere with other electric systems

## How Hydropath Technology Works

The difference between Hydropath Technology and other physical water conditioning technologies is our induced signal and its ability to treat an entire system, continuously. *HydroFLOW*'s water conditioners induce an electric signal of  $\pm 150$  kHz into any water pipe on which they are installed (metal or PVC).



The electric induction is performed by a special transducer connected to a ring of ferrites. Just as an electrical wire carries current from point A to B, the water inside the pipe acts as a conductor and carries the induced electric signal throughout the entire water system. The oscillating sine waves of the induced AC signal cause the positively and negatively-charged ions to form suspended clusters in the water, preventing them from attaching to rough surfaces. Testing shows that compared to other technologies, Hydropath Technology is 30,000 times more efficient.

**NANO TEK-ON**  
RESTORE PROTECT MAINTAIN

"Innovations that put nature to work for you!"



## Chemical-free water treatment for:

- RESIDENTIAL
- DISHWASHERS
- STEAM ROOMS
- HUMIDIFIERS
- ICE MAKERS
- STEAM OVENS
- WATER HEATERS
- SMALL AQUARIUMS
- OTHER COMPLEX SCALE APPLICATIONS



Nano Tek-On LLC

906 Koko Isle Cir, Honolulu HI 96825  
(808) 395-2996 • nanotekhi@hawaii.rr.com  
www.nanotekhi.com

## Overview

The **S38** water conditioner provides a chemical-free solution for the harmful effects of limescale, corrosion, bacteria, and algae. This powerful and durable water conditioner is designed for easy installation on pipes up to 1 1/2" OD. The S38 induces a unique electric signal into the water system, which immediately prevents limescale accumulation and breaks up existing limescale deposits overtime.

## BEFORE AND AFTER



## Limescale

Almost everyone in Hawaii has minerals in their water; lots of minerals make our water "hard." Hard water causes several problems, mainly the buildup of lime scale

The scale reduces the flow of water through the plumbing until the pipes are completely clogged. The minerals also are a poor conductor of heat so it takes long for hot water to come out of the tap. Hard water also is the culprit of spotting on shower doors.

Water, electric, solar, heat pump, and tankless heaters are the workhorse appliance. It dependably heats your water day in and day out. Until the buildup and corrosion inside the water heater has taken its toll.

**HydroFlow will prevent that from happening.**

## Algae and Bacteria

The *HydroFLOW* water conditioner kills bacteria and algae passing through the unit. Besides the obvious health benefits that this provides, there is also a subsequent reduction in biofilm within the water system.

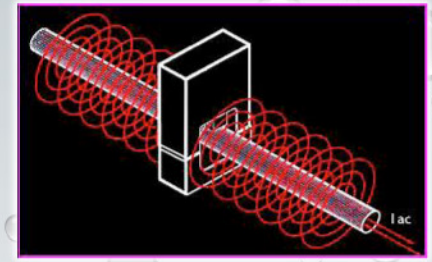


## Filtration

The **S38** water conditioner enhances filtration via flocculation. The unit charges suspended particles causing them to flock into larger particles which are more easily filtered out of water systems.

## Chemical and Microbial Corrosion

The signal induced by the *HydroFLOW* water conditioner interferes with the electro-chemical reaction necessary for corrosion to take place. As a result, corrosion to metal pipes and components is reduced by up to 66%. In addition, microbial-induced corrosion is significantly reduced as the bacteria passing through the water condition burst and die.



## Specifications

- Activity-monitor light operated by feedback to show the signal is being transmitted in the water (i.e. correct operation)
- Certified to the requirements of ISO 9001:2000, CSA/UL and CB.
- Reliable, solid-state circuitry which is environmentally-protected, ensuring long life and reliability.
- Height 114mm (4.5")
  - Width 68mm (2.7")
- Depth 30mm (1.2")
  - Weight 210g (7.4 Oz.)



*HydroFLOW retains the right to alter the specification with prior notice*

